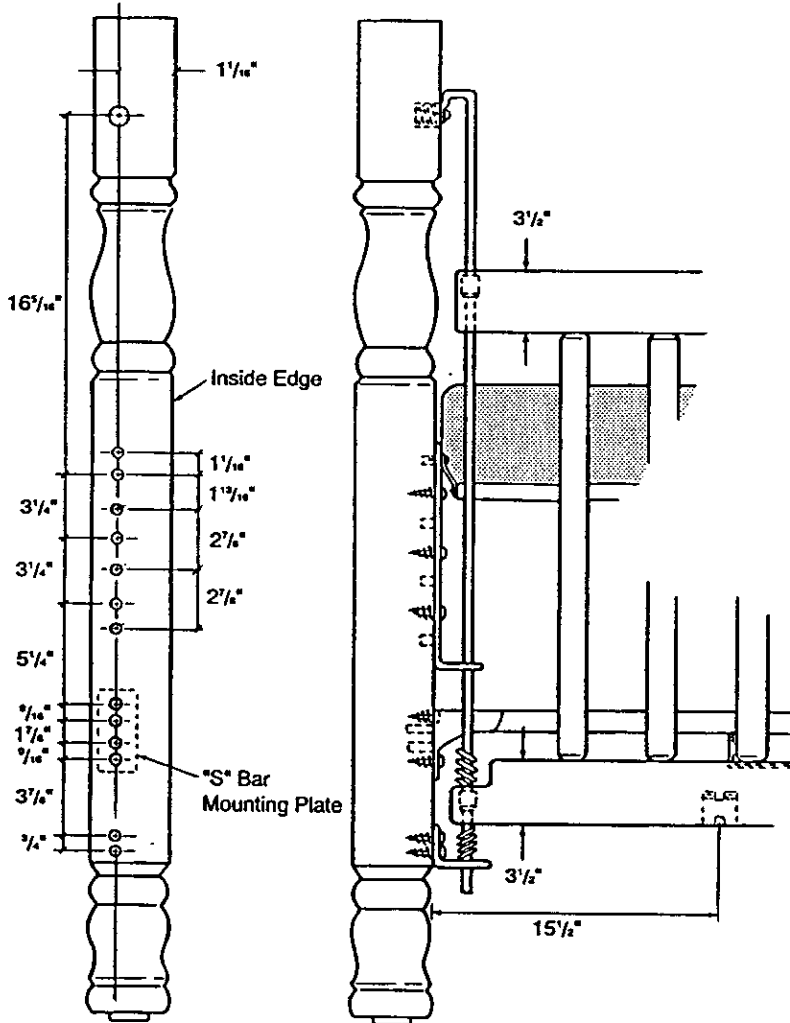


**FEATURES:**

- set includes the necessary hardware for building a crib
- designed for use with crib plan 39453 or crib plan #84773, although different designs can be adapted at the builder's discretion
- crib sides can be raised or lowered
- crib spring adjusts to different positions
- spring frame and crib side release bar are painted brown, other parts are nickel plated
- clear plastic teething rail included

**APPLICATION:**

A hardware set used in the construction of a crib.



End View

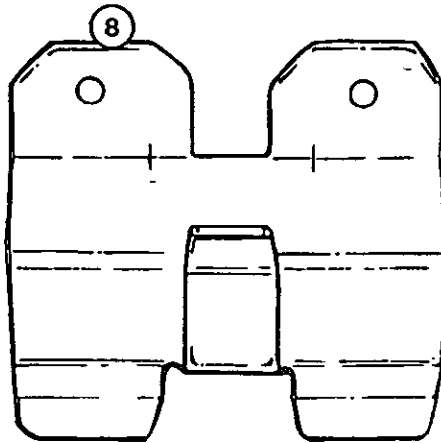
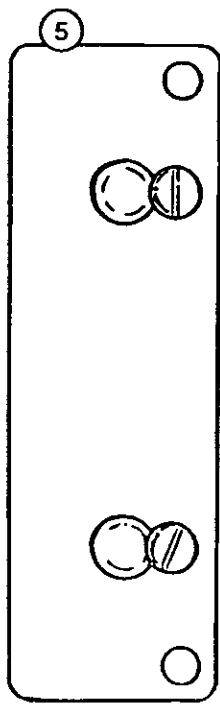
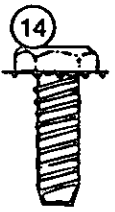
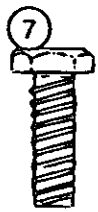
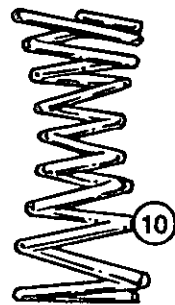
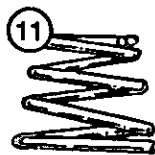
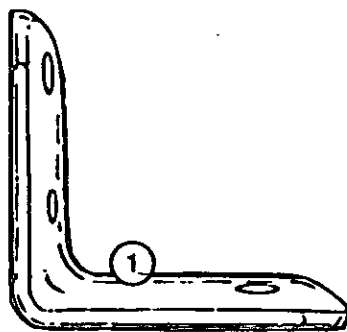
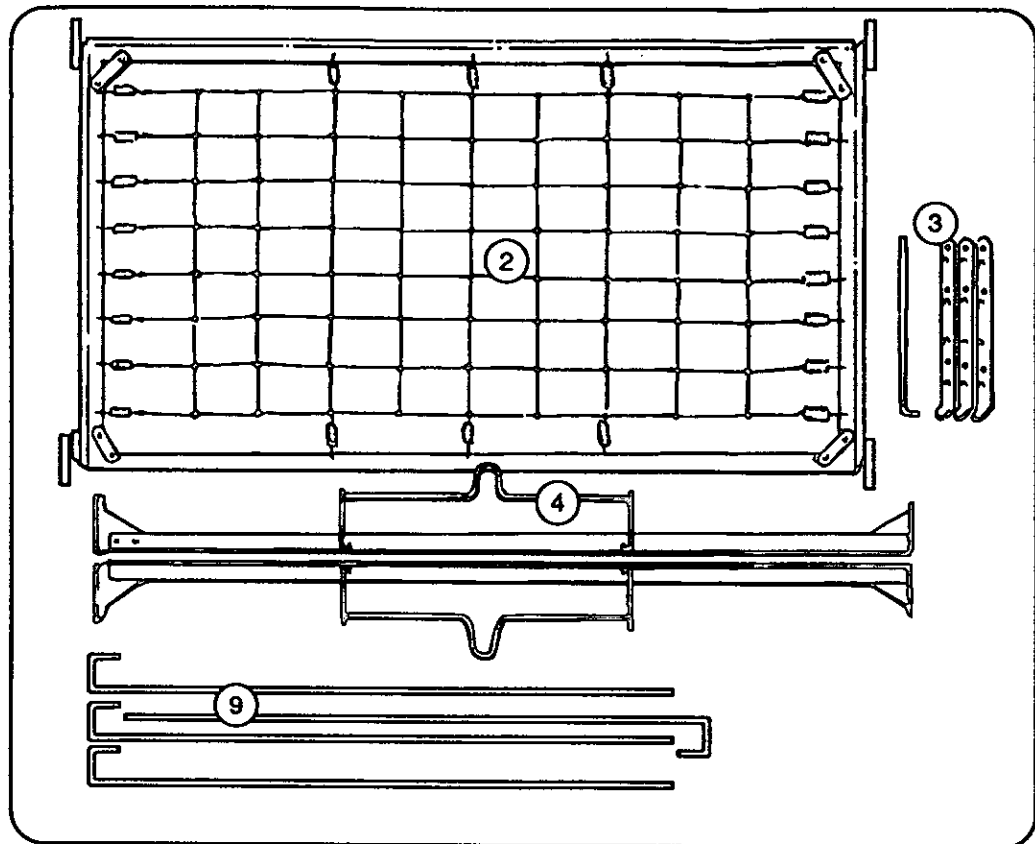
Front View

**INSTRUCTIONS:**

**Assembly**

1. **Note:** All of the relative hole spacings (shown in the elevations) must be maintained once you've established the distance from the lowest hole position to the floor.
2. Attach the angle brackets (4) at the lowest hole positions.
3. Attach the "S" bar mounting plates (4) in the holes immediately above the angle bracket. The bracket is secured to the post using two of the four holes.
4. Attach the corner post brackets (4). **Note:** The lowest mounting hole for this bracket is 5-1/4" up from the top screw location of the mounting plate.
5. Install the threaded inserts (4) into the top holes on the posts. These inserts require a 7/16" diameter pilot hole.
6. Mount the "S" bar to the mounting plate. This step of the assembly will bring your crib together as a unit.
7. Drill 1/2" diameter holes through the crib rails for the plastic bushings (8). To establish these hole locations you must measure between the holes of the angle brackets. This measurement is transferred to the four rails. A drop of epoxy glue may be used to secure the bushings to the rails.
8. Attach the gate shoes (4) to the inside of the lower crib rails. The purpose of the gate shoe is to engage the "S" bar in order to support the sides. The illustrations below show the proper orientation and measurements for mounting the gate shoes.
9. The sides are now put in place using the steel guide rods. Start by resting a side rail in position on the rod angle brackets. Insert a guide rod through the top rail, then the corner post bracket, through a compression spring, the lower rail, a bumper spring, and finally through the angle bracket. Secure the rod at the top with a 1/4" x 20 bolt.
10. The final step is to attach the crib spring to the four corner posts using the four 1/4" x 20 x 1/2" machine bolts. There are four holes in the corner post brackets that are threaded to accept these bolts.

**Gateshoe / "S" Bar Assembly**



Parts List		
#	Description	Qty.
1	.....Angle Bracket .....	4
2	.....Crib Spring .....	1
3	.....Corner Post Bracket .....	4
4	....."S" Bar .....	2
5	....."S" Bar Mounting Plate .....	4
6	.....1/4" x 20 Threaded Insert ...	4
7	.....1/4" x 20 Machine Bolts .....	4
8	.....Gateshoe .....	4
9	.....Crib Rod.....	4
10	.....Bumper Spring .....	4
11	.....Compression Spring .....	4
12	.....Plastic Bushing .....	8
13	.....Wood Screws.....	36
14	.....Crib Spring Bolts.....	4

