

# SOLID BRASS SUPPORT

32102

## FEATURES:

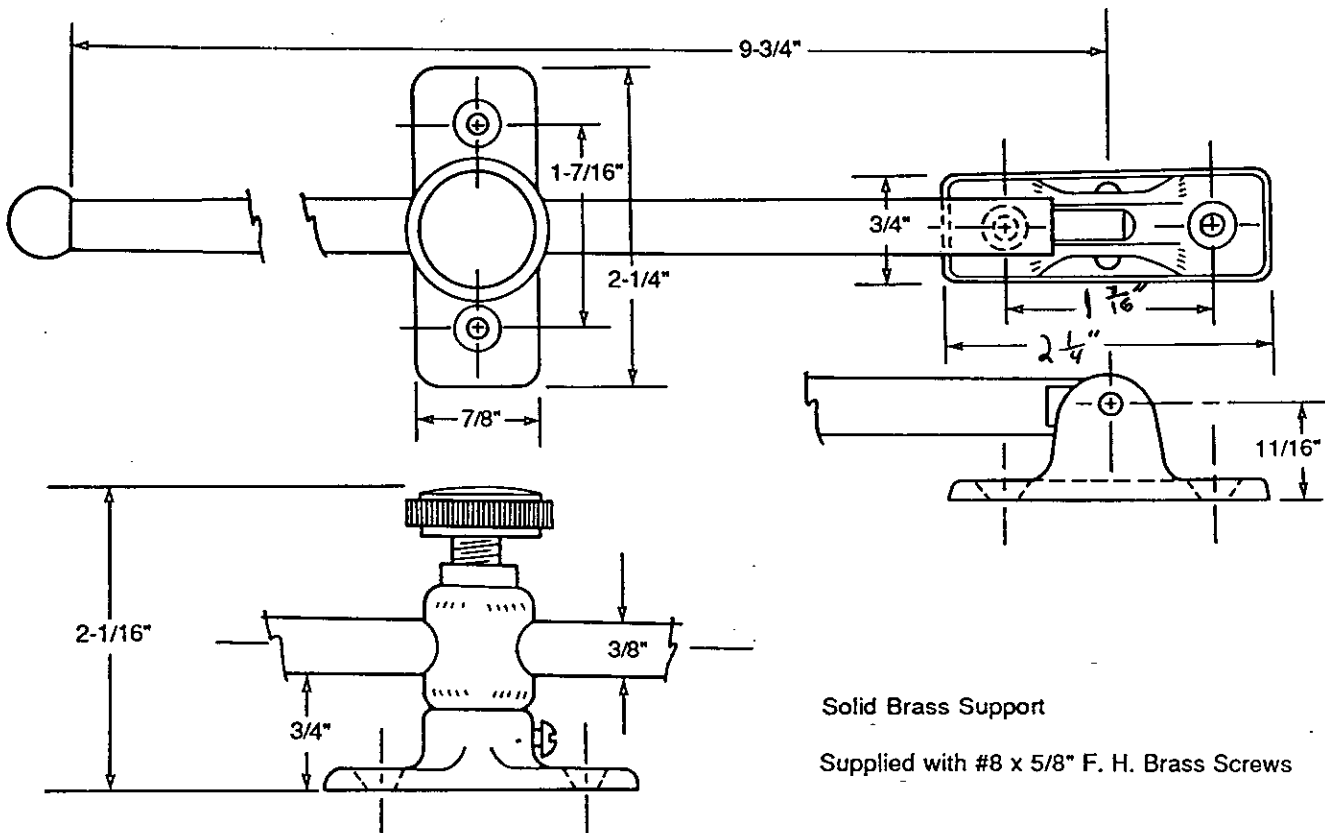
- made from solid brass
- polished with lacquer finish
- has 8-3/4" of rod travel
- knurled locking bolt
- surface mounts
- supplied with brass mounting screws
- arm measures 10" long

## APPLICATION:

A multipurpose support for use with drafting tables, boxes, doors, windows, etc.

## SPECIFICATIONS:

## INSTALLATION:



Solid Brass Support

Supplied with #8 x 5/8" F. H. Brass Screws