

FEATURES

- same quality as those used by national furniture manufacturers
- vertical height of 3" between base and swivel plates
- has 4 side and 1 rear rocker springs
- plates are 0.104 thick steel - 12 gauge
- swivel plate bearing is made up of 2 disc nylon bearings riding against each other that are self lubricating

APPLICATIONS:

A rocker swivel for chairs!

SPECIFICATIONS:

INSTRUCTIONS:

1. Turn chair upside down and locate center lines on chair bottom as shown in fig. 4. Position upper rocker plate on center lines and mark holes. Remove swivel and drill pilot holes for lag bolts.
2. Locate center lines on platform base as shown in fig. 5. Locate holes 4" from center on 90° diagonals. Drill pilot holes for either 1/4" lag screws or machine bolts.
3. Attach swivel plate to platform base with 1/4" lag screws or machine bolts and nuts by turning swivel to line up access hole with screw slots in plate.
4. Place platform on to upside down chair and attach upper rocker plate to chair base with 1/4" lag screws. Make sure to have side with extra (or 5th) spring positioned to back of chair.

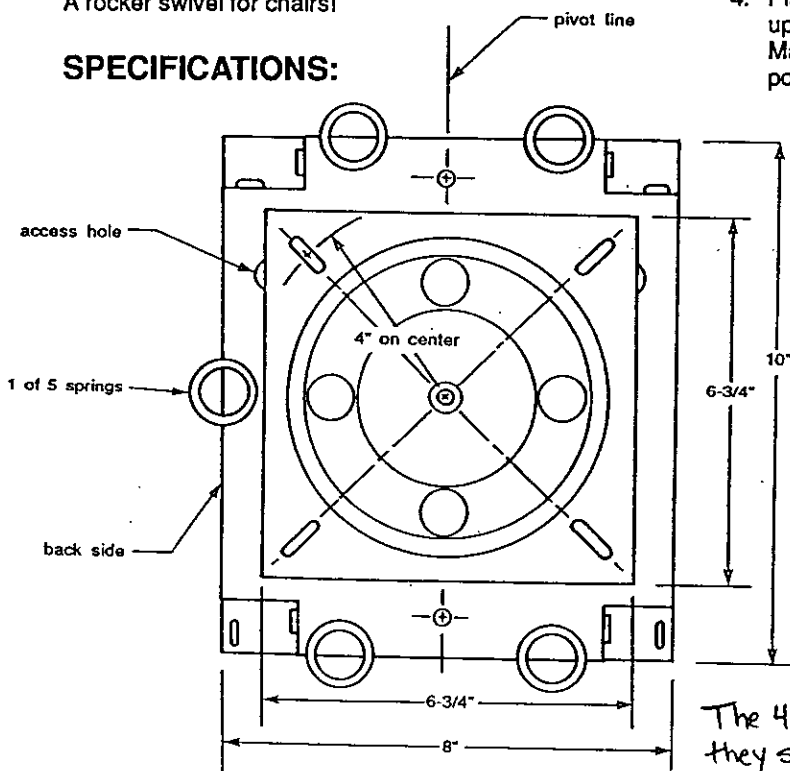


Fig. 1

The 4 nylon plugs are not to be removed - they should remain in tact.

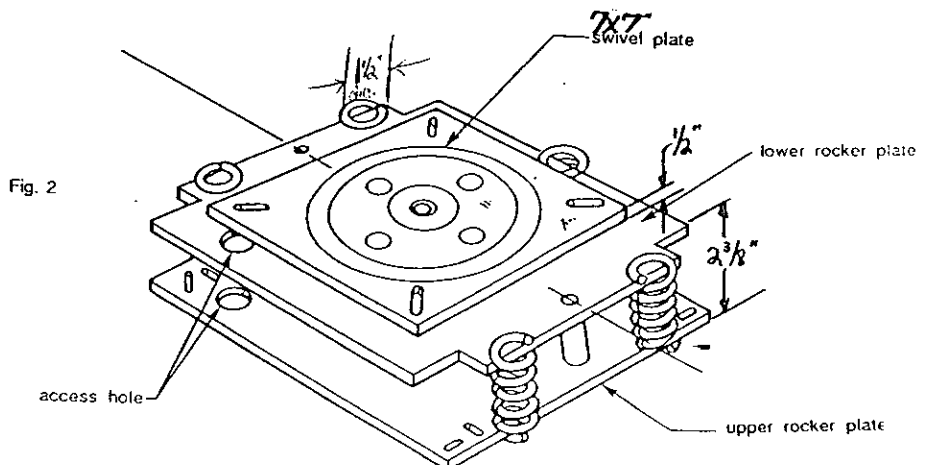


Fig. 2

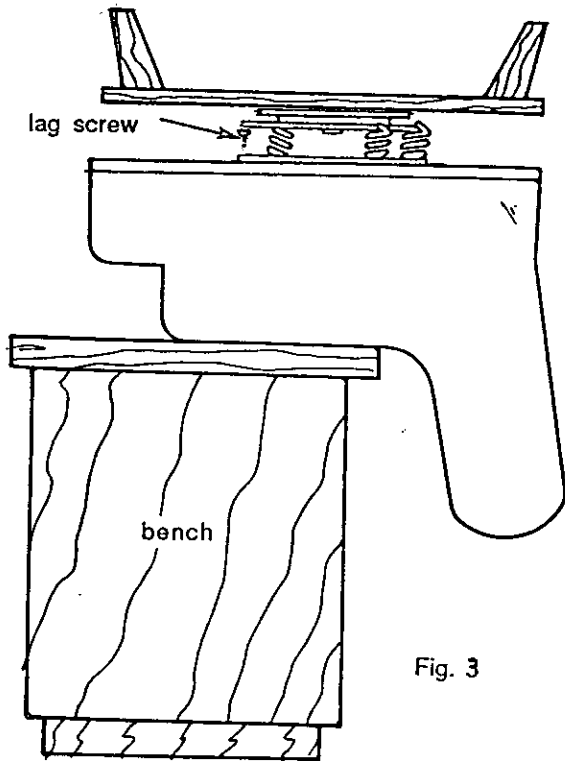


Fig. 3

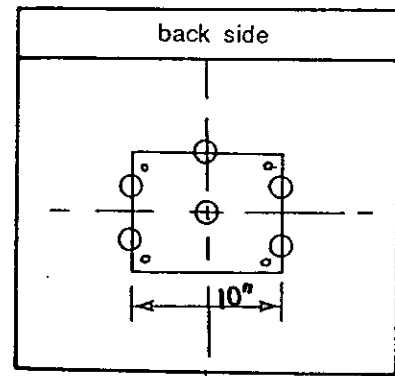


Fig. 4

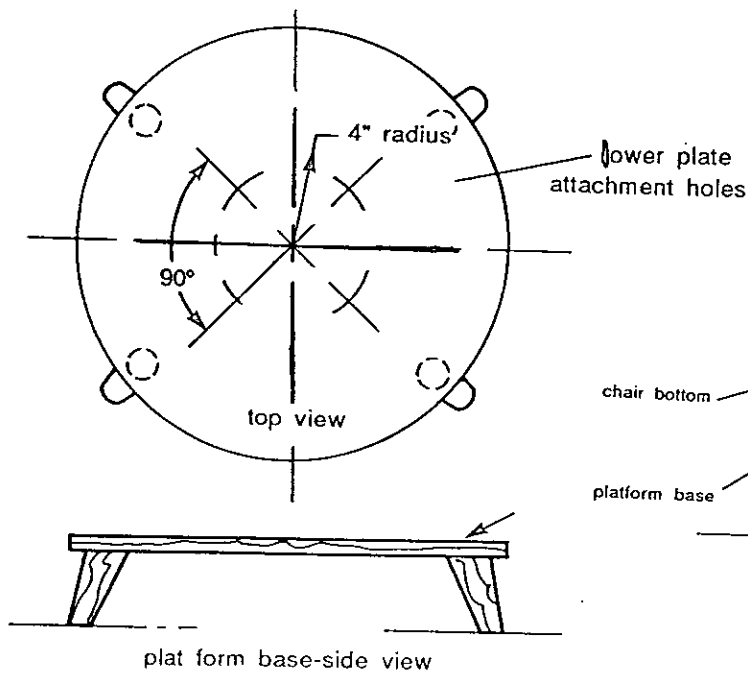


Fig. 5

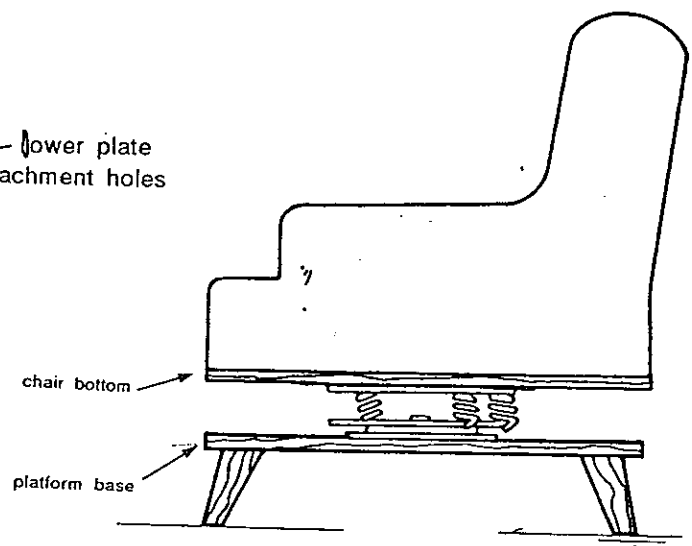


Fig. 6