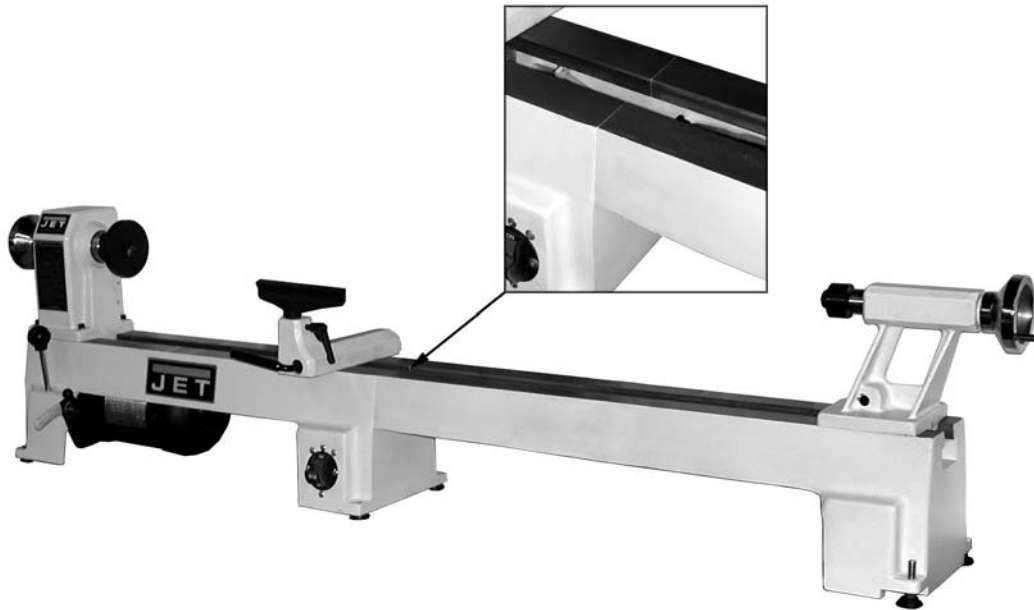


JML-BE Bed Extension

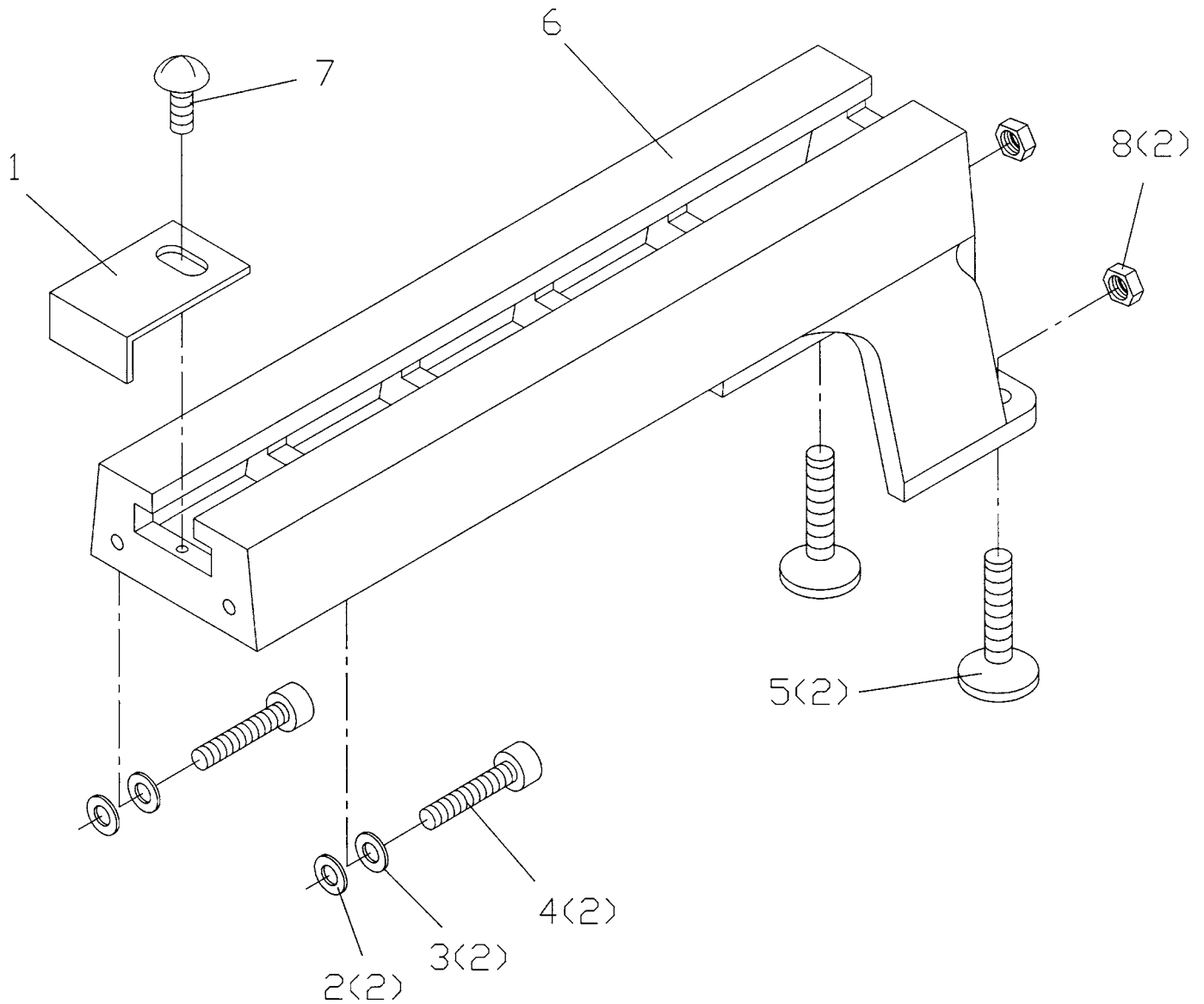


Assembly

1. Attach the plate, where the two beds meet, with one screw.
2. Mount the bed extension to your JML-1014 with two hex socket cap screws, two lock washers and two flat washers. Snug the screws but do not tighten..
3. Move the tailstock over the joint, and line the clamping nut in the center, where the two beds meet. Tighten the tailstock clamping lever, and tighten the two hex socket cap screws. This procedure will help get the beds lined up, and flush. Move the tailstock out of the way.
4. The tailstock end of the bed extension has two leveling pads. Use a straight edge along the length of the beds and raise, or lower the pads so that there are no gaps between the bed and straight edge.

Note: If you have an older version JML-1014 (serial # 10518872 and lower), and want to use the bed extension, you will need to use the retro fit kit (part # 708357).

Parts Breakdown



Parts List for JML-1014 Bed Extension

Index No.	Part No.	Description	Size	Quantity
1	JML-BE01	Plate		1
2	TS-0680031	Flat Washer	5/16	2
3	TS-0720081	Lock Washer	5/16	2
4	TS-0208061	Hex Socket Cap Screw	5/16 x 1	2
5	JML-BE05	Level Pad		2
6	JML-BE06	Extension Bed		1
7	TS-081B05	Screw	1/4 x 1/2	1
8	TS-0561021	Hex Nut	3/8	2