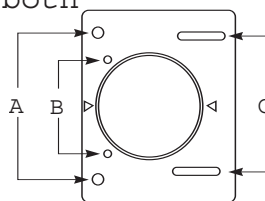


JIG IT™

This JIG IT is designed to be used for both frameless and face frame cabinets.

Jig Assembly

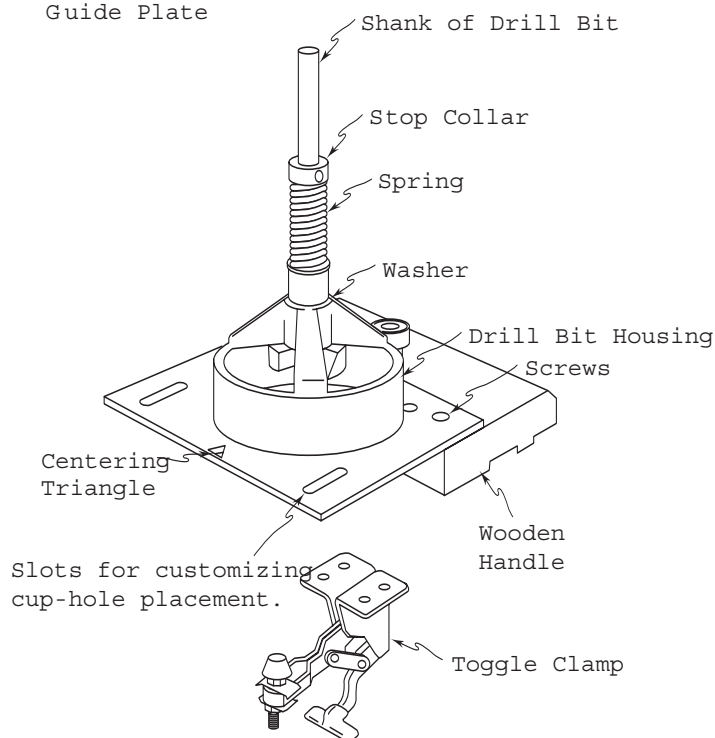
- 1.) Determine if your project will require assembling the JIG IT for frameless or face frame construction.
- 2.) When mounting JIG IT handle for frameless construction use holes in position A on guide plate. For face frame construction use holes in position B on guide plate. For custom placement of the cup hole use slots at position C.
- 3.) Secure the wooden handle to the guide plate. Use the pilot holes and the #6 x 5/8" screws provided.
- 4.) Center clamp on bottom of handle as close to the edge as possible. Mark and drill 1/8" pilot holes. Secure clamp using #6 x 5/8" wood screws provided.



A = 5mm Tab Distance
 B = 3mm Tab Distance
 C = Variable Tab 0mm-6mm

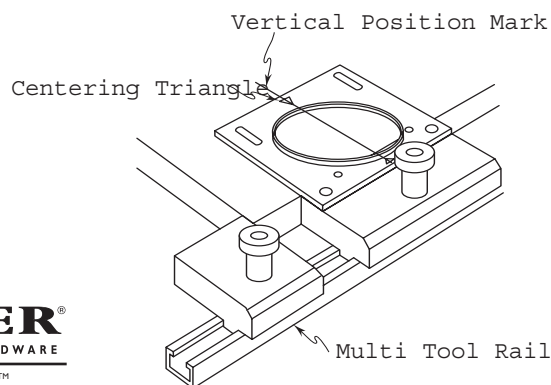
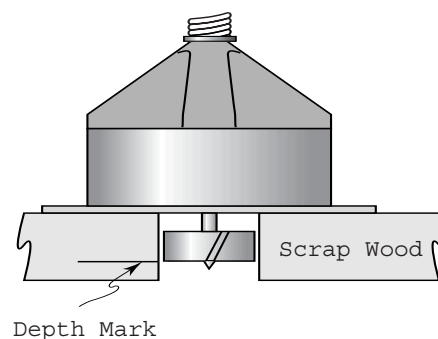
Drill Housing Assembly and Depth Setting

- 1.) Insert the drill bit into the housing.
- 2.) Slide washer and spring over shaft of the bit so it rests on top of the drill bit housing.
- 3.) Slide stop collar over the shaft of the bit, set drilling depth and tighten.
 - Depth Setting
 - A.) Determine hinge cup depth to be drilled.
 - B.) Using two identically thick pieces of wood, mark the correct depth on the edge of the wood.
 - C.) Place the two pieces of wood on either side of the bit and under the drill bit housing. This will allow the drill bit to come below the housing edge in order to set the depth accurately.
 - D.) Once the bit is at the desired depth compress the spring with the stop collar until it is unable to be compressed any more and tighten the set screw. This will set your drilling depth.
 - E.) Drill a couple of test holes to fine tune the cup depth and lessen the chance of error when beginning the actual drilling project.
- 4.) For "freehand" drilling without the guide plate, attach 4 small plastic bumpers to the bottom edge of the drill bit housing. These will help prevent the housing from slipping on the work surface.



Use Your Concealed Hinge JIG IT

- 1.) Mark vertical position of hinges on the inside of door.
- 2.) Align centering triangle of JIG IT template with line. Clamp in place.
- 3.) With the drill bit assembly attached to your drill, align the bit housing over the JIG IT plate lip and drill the hole to the desired depth. Insure that the bit housing stays flat on the plate to create the proper 90° contact to the drilling surface.
- 4.) To use your Concealed Hinge JIG IT with the Multi Tool Rail, place your stop block on the rail at the bottom edge. Slide two or more Concealed Hinge JIG ITs onto rail (do not tighten).
- 5.) With the stop block against the door's bottom edge, align the first JIG IT, clamp in place and tighten onto tool rail. Repeat for each JIG IT.
- 6.) Drill normally, release clamps and place unit on the next door and clamp.



Create with Confidence™

© Rockler Companies Inc. 2006