

Metal Drawer System

Instructions

Cut drawer bottom, back and drawer front for desired finished drawer measurements. Assemble drawer bottom first followed by back panel and then front panel.

Drawer Bottom

Width = internal cabinet width minus 1-1/8" (31mm)
Length = Drawer length minus 5/64" (2mm)

Drill two holes on the underside of the drawer bottom as indicated fig. A.

Drawer Back

Drawer back should be the same width as the bottom panel and the height no less than drawer sides, including bottom panel thickness.

Drawer Front

Choose either the standard drawer front bracket for overlay and flush drawer fronts or the internal drawer bracket.

For the **standard drawer** front bracket make your drawer front, as your cabinet requires.

Mount the bracket to the drawer front and slip onto the drawer sides.

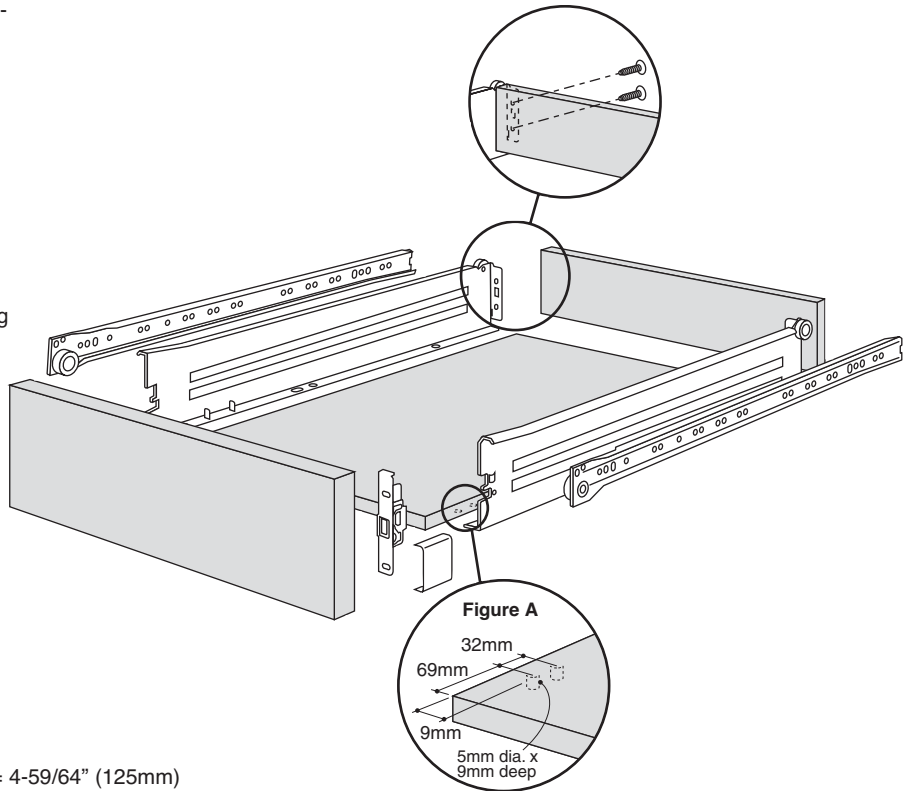
Tighten top screw to secure bracket to drawer side.
Use bottom screw to align drawer front horizontally to cabinet - see illustration below.

For **internal drawer brackets** cut panel to fit.

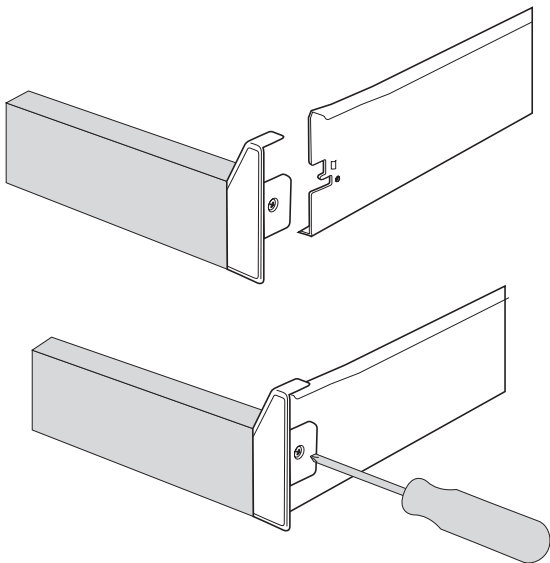
Width = internal cabinet width minus 2-13/32" (64mm)
Height = 2-13/32" (61mm) on drawer height 3-3/8" and = 4-59/64" (125mm) for drawer height 5-7/8".

Mount panel to bracket.

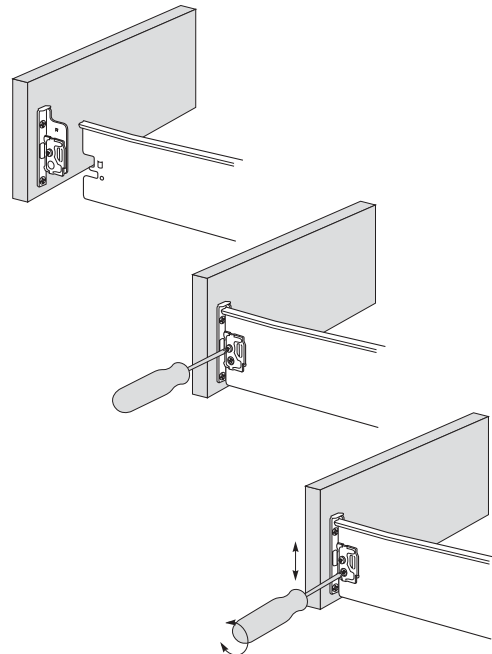
Slide brackets onto drawer sides and tighten screw - see illustration below.



Installing Internal Drawer Fronts



Installing Standard drawer Fronts



49191 49230
49199 49237
49207 49245



Create with Confidence™

© Rockler Companies Inc. 2001

RTD10310870AA

REV. 9/06

310870