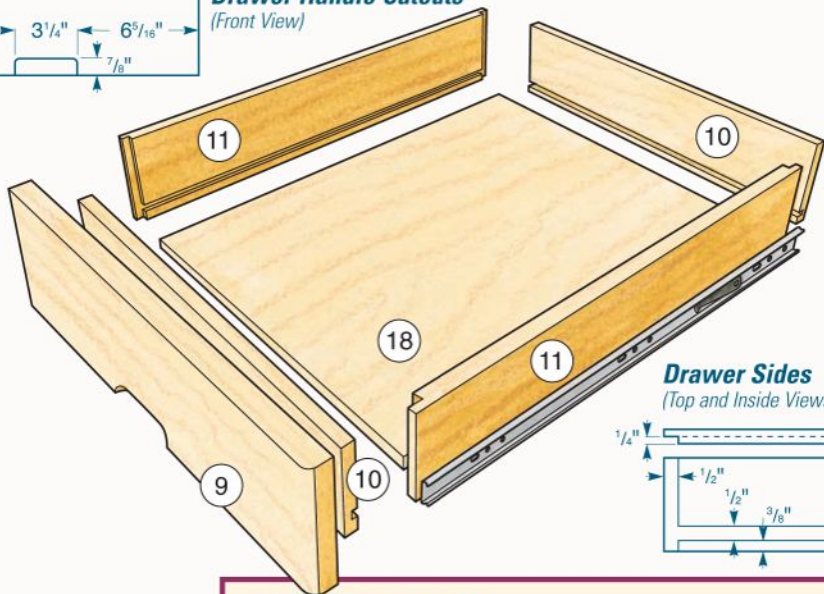
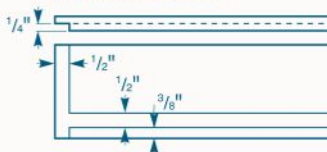


### Drawer Handle Cutouts (Front View)



### Drawer Sides (Top and Inside Views)



### Drawer Joinery

Ease the drawer face edges with a 1/2" dia. roundover bit.

← 1 3/16" →

## MATERIAL LIST (DRAWERS)

	<b>T x W x L</b>
<b>9</b> Top Drawer Face (1)	3/4" x 4 1/2" x 15 5/8"
<b>10</b> Top Drawer Front/Back (2)	1/2" x 3 3/4" x 13"
<b>11</b> Top Drawer Sides (2)	1/2" x 3 3/4" x 16"
<b>12</b> Middle Drawer Face (1)	3/4" x 7 3/4" x 15 5/8"
<b>13</b> Middle Drawer Front/Back (2)	1/2" x 7 3/4" x 13"
<b>14</b> Middle Drawer Sides (2)	1/2" x 7 3/4" x 16"
<b>15</b> Bottom Drawer Face (1)	3/4" x 10 1/4" x 15 5/8"
<b>16</b> Bottom Drawer Front/Back (2)	1/2" x 10 1/4" x 13"
<b>17</b> Bottom Drawer Sides (2)	1/2" x 10 1/4" x 16"
<b>18</b> Drawer Bottoms (3)	1/2" x 13" x 15 1/2"