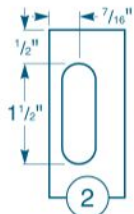
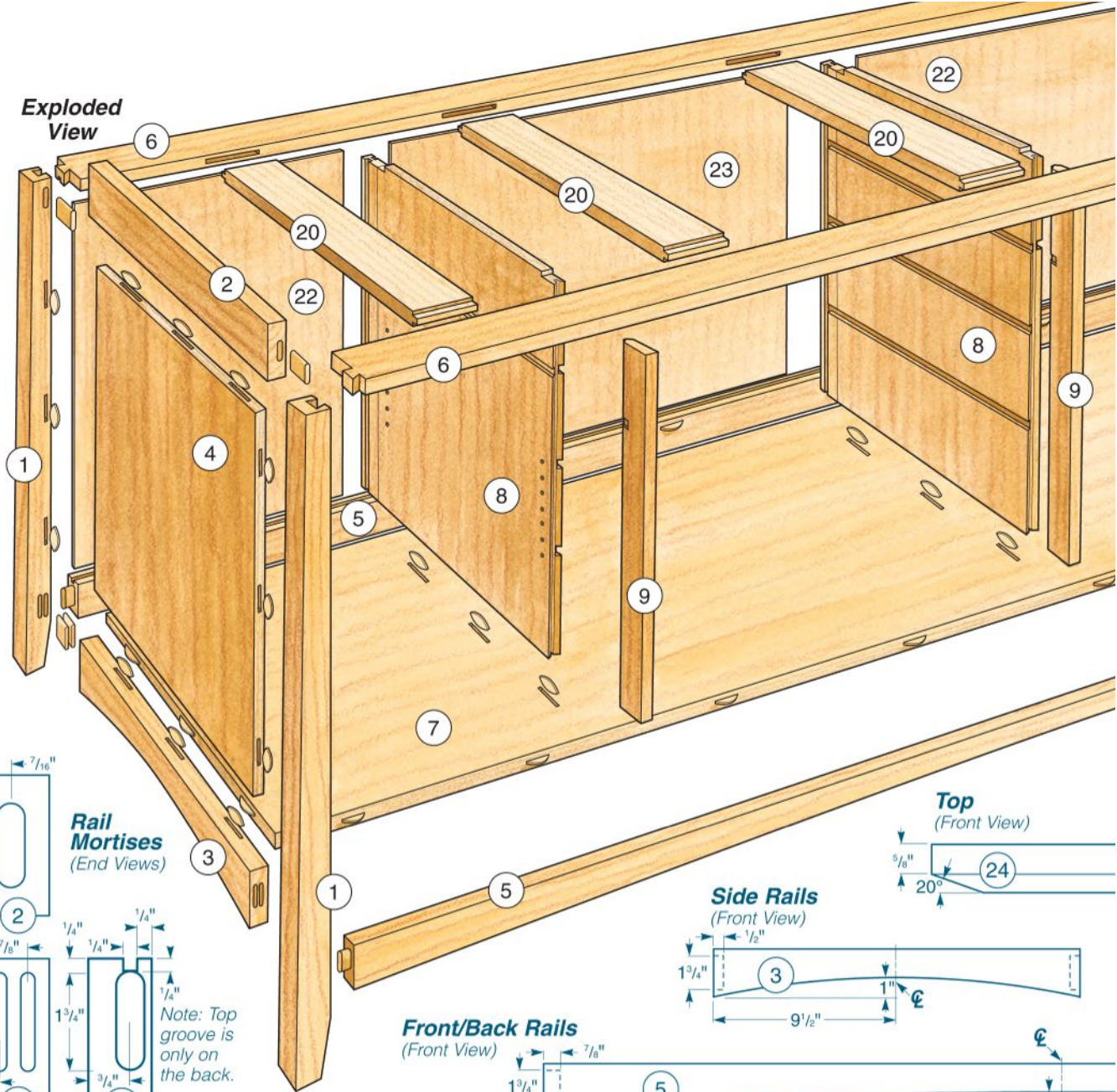
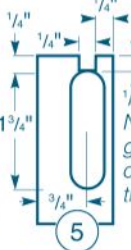
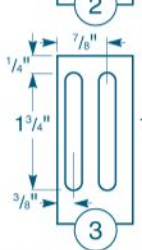


Exploded View



Rail Mortises
(End Views)



Note: Top groove is only on the back.

Note: Inside faces on these three rails are shown on the left.

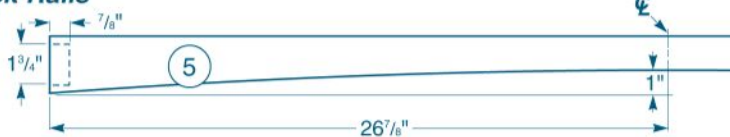
Top
(Front View)



Side Rails
(Front View)



Front/Back Rails
(Front View)



MATERIAL LIST (CARCASS)

	T x W x L
1 Legs (4)	1 1/2" x 1 1/2" x 30 3/4"
2 Side Top Rails (2)	1 1/8" x 2 1/2" x 19"
3 Side Bottom Rails (2)	1 1/8" x 2 1/2" x 19"
4 Side Panels (2)	3/4" x 19" x 23"
5 Front/back Bottom Rails (2)	1 1/8" x 2 1/2" x 53 3/4"
6 Front/back Top Rails (2)	3/4" x 2" x 55"
7 Bottom Panel (1)	3/4" x 19" x 53 3/4"
8 Partition Panels (2)	3/4" x 19" x 25 1/2"
9 Partition Edge Banding (4)	3/4" x 1 5/8" x 25 1/2"
10 Short Drawer Dividers (2)	3/4" x 3 1/2" x 13 1/8"
11 Long Drawer Dividers (3)	3/4" x 3 1/2" x 26 3/4"
12 Short Web-frame Rails (2)	3/4" x 2" x 13 1/8"

	T x W x L
13 Long Web-frame Rail (1)	3/4" x 2" x 26 3/4"
14 Top Drawer Runners (6)	3/4" x 2" x 16 1/8"
15 Wide Top Drawer Runner (1)	3/4" x 4" x 16 1/8"
16 Dust Panels (2)	1/4" x 10 1/8" x 16"
17 Center Drawer Runners (4)	3/4" x 2" x 17 5/8"
18 Vertical Drawer Divider (1)	3/4" x 3 1/2" x 3 3/4"
19 Drawer Guide (1)	3/4" x 1" x 17 1/8"
20 Top Stiles (4)	3/4" x 2" x 18 1/4"
21 Drawer Stops (10)	1/4" x 1" x 1"
22 Narrow Back Panels (2)	1/4" x 13 3/8" x 25"
23 Wide Back Panel (1)	1/4" x 27" x 25"
24 Top (1)	1" x 25 1/4" x 60"