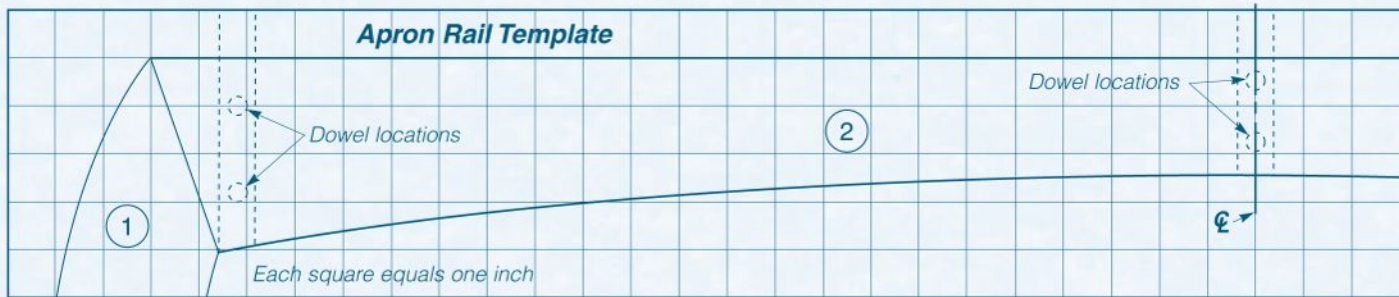
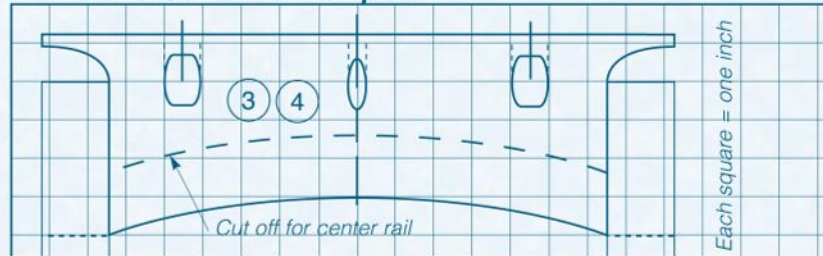


Apron Rail Template

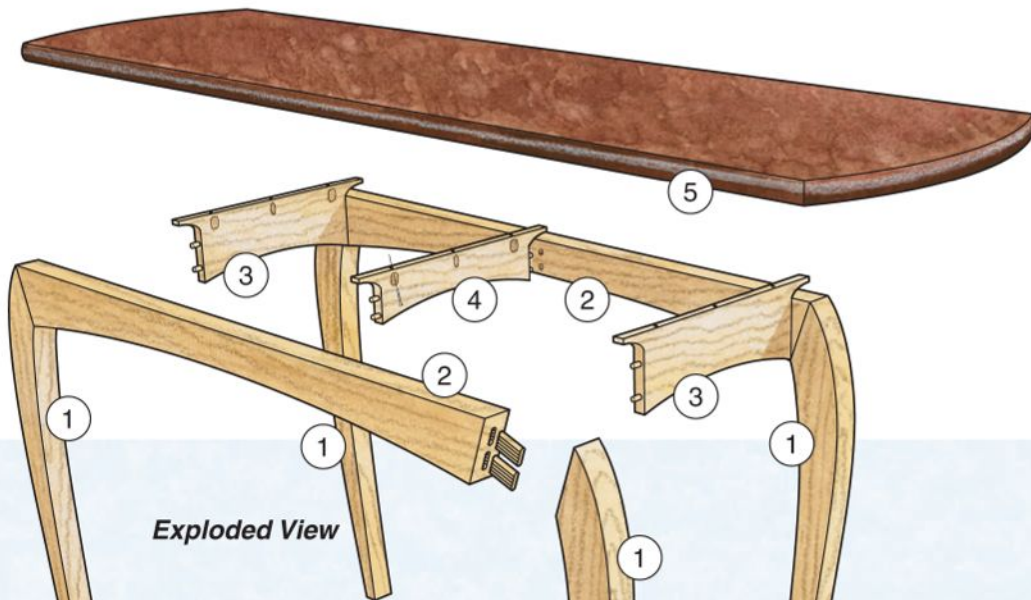
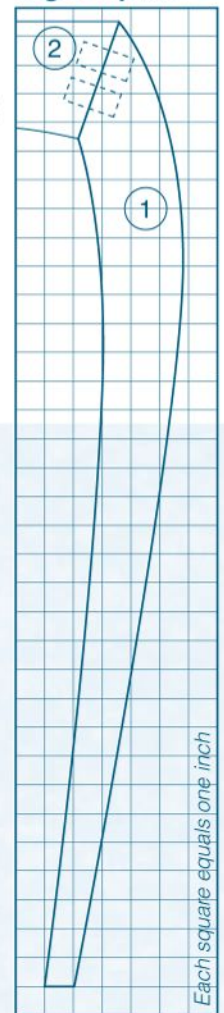


End and Center Rail Template

There are three pocket-hole joints bored into each end and center rail to hold the tabletop to the legset. The pocket-hole joints to the left and right of the center hole should be drilled double-wide to allow for wood movement in the solid tabletop.



Leg Template



MATERIAL LIST

	T x W x L
1 Legs (4)	1 ³ / ₄ " x 5" x 33 ¹ / ₂ "
2 Apron Rails (2)	1 ³ / ₄ " x 4 ¹ / ₈ " x 46"
3 End Rails (2)	3/4" x 5 ³ / ₈ " x 16 ³ / ₄ "
4 Center Rail (1)	3/4" x 3 ³ / ₈ " x 16 ³ / ₄ "
5 Top (1)	1 ¹ / ₂ " x 20" x 76"

Leg

(Section View)

The leg and tabletop have a slight radius formed on their edges. Use a 1¹/₄" radius roundover bit to break the edges, then follow up by sanding the profile smooth.