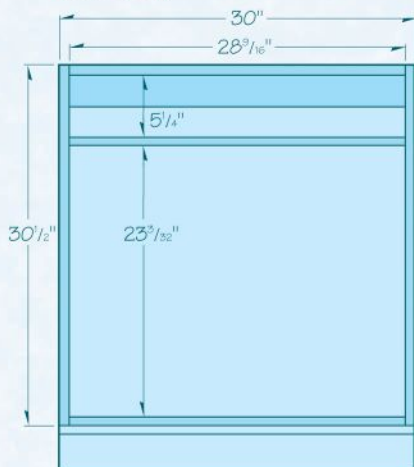
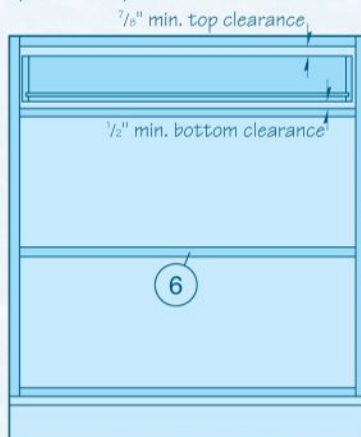


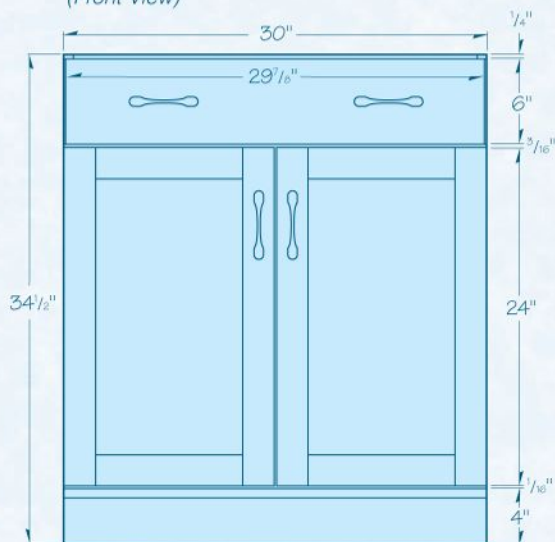
Carcass and Base Elevation
(Front View)



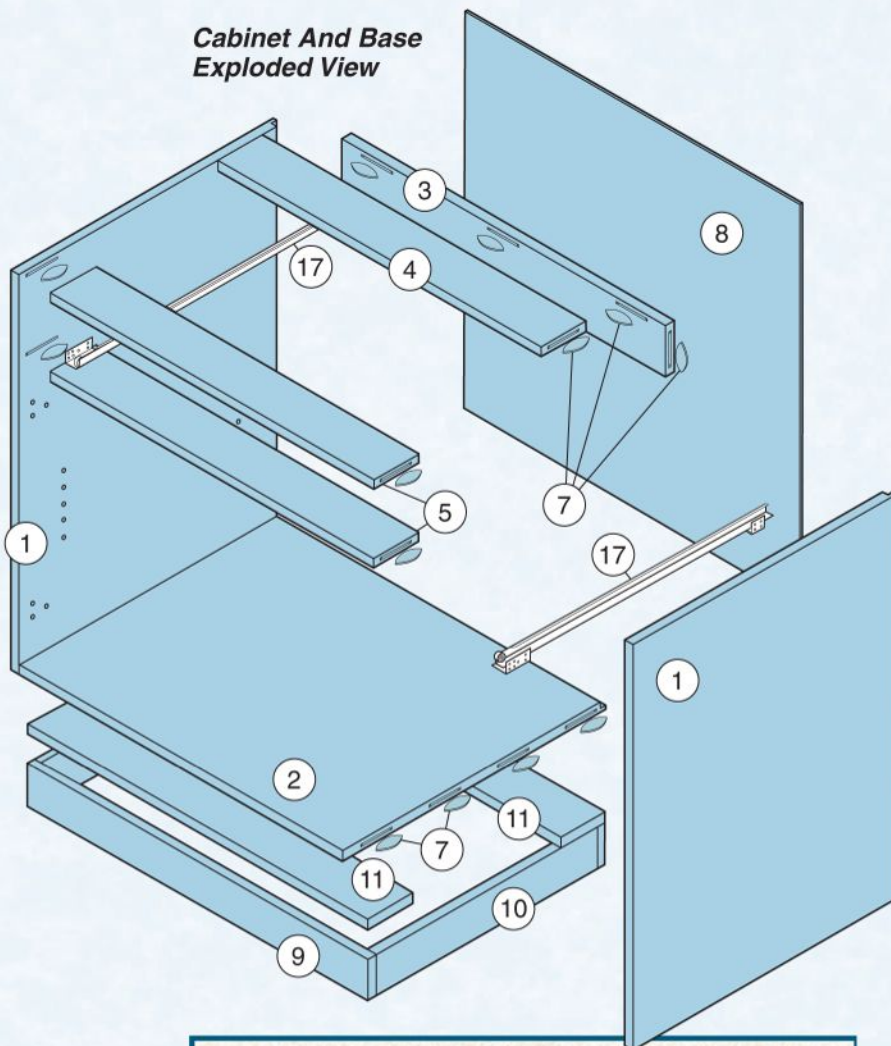
Carcass and Base Elevation
(Front View)



Carcass and Base Elevation
(Front View)



Cabinet And Base Exploded View



CABINET (CARCASS AND BASE)

	T x W x L
1 Carcass Sides (2)	3/4" x 23 1/4" x 30 1/2"
2 Carcass Bottom (1)	3/4" x 23 1/4" x 28 9/16"
3 Nailing Cleat (1)	3/4" x 3 1/2" x 28 9/16"
4 Rear Top Rail (1)	3/4" x 3 1/2" x 28 9/16"
5 Drawer Rails (2)	3/4" x 3 1/2" x 28 9/16"
6 Removable Shelf (1)	3/4" x 22 1/4" x 28 1/4"
7 Biscuits (19)	#10
8 Back (1)	1/4" x 29 1/2" x 30 1/4"
9 Base Front and Back (2)	3/4" x 3 9/32" x 30"
10 Base Sides (2)	3/4" x 3 9/32" x 19 9/16"
11 Base Cleats (2)	3/4" x 4" x 30"